

10 June 2004

Trimble R7/R8 and 5000 Series Receivers: Verification of Valid Warranty Agreement

Before you can install firmware on a Trimble® R7/R8 or 5000 Series GPS receiver, you must make sure that the Firmware Option date is valid, or was valid when the firmware that you are trying to install was released.

For example, if the Firmware Option date on a receiver is 2/2004, you can update the receiver with all firmware that was released up to and including that date. You can load the firmware after the actual Firmware Option date (2/2004), so long as the Firmware Option was valid when the firmware was released.

If firmware is released after the Firmware Option date (for example, 4/2004), in most cases you cannot load the new firmware onto a receiver with an earlier Firmware Option date (for example, 2/2004).

From time to time, a firmware release may include a special warranty date that is different from the actual firmware release date. In such cases, you can update a receiver with this new firmware even if the Firmware Option has expired. However, this situation does not occur often.

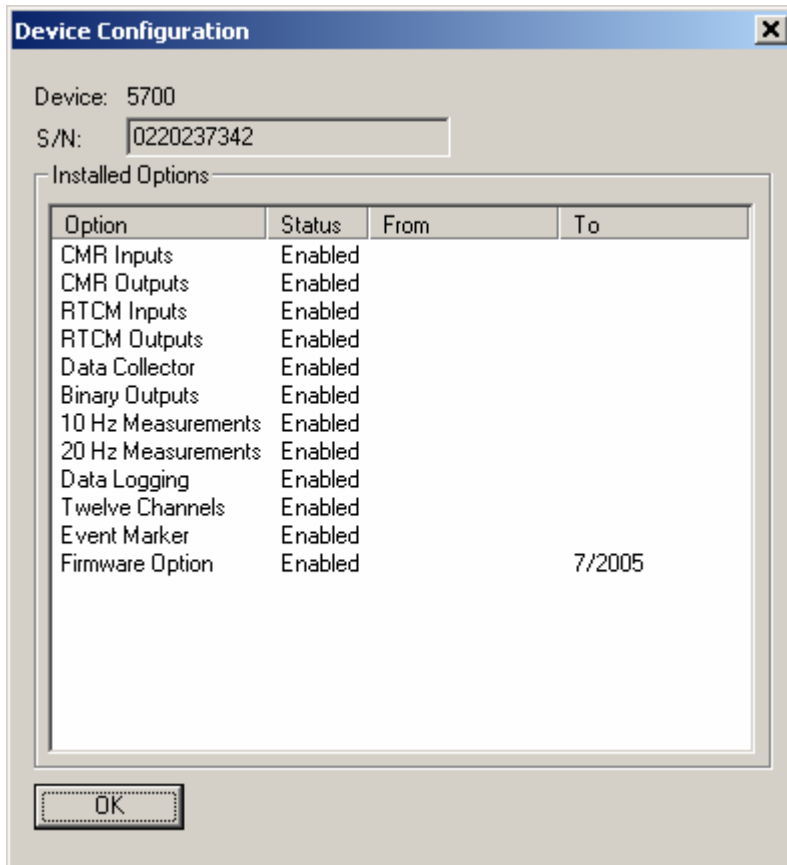
Checking the firmware expiry date

1. Connect the receiver to the office computer.
2. Using the WinFLASH software, connect to the GPS receiver. WinFLASH is supplied on the GPS receiver CD.
3. From the WinFLASH main screen, select the appropriate device and then click **Next**.
4. Select *Verify Receiver Options*.
5. Click **Next** and then click **Finish**.

Trimble Geomatics and Engineering Division, 5475 Kellenburger Road, Dayton, OH 45424, USA

© 2004, Trimble Navigation Limited. All rights reserved. Trimble and the Globe & Triangle logo are trademarks of Trimble Navigation Limited registered in the United States Patent and Trademark Office and other countries. All other trademarks are the property of their respective owners. This document is for informational purposes only. Trimble makes no warranties, expressed or implied, in this document.

The *Device Configuration* dialog appears:



6. Note the Firmware Option date shown in the *To* column. This is the date that the firmware option expires.

The following table describes the support status for Trimble R7/R8 and 5000 Series receivers.

Receiver firmware	Version	Warranty date	Support status
Trimble R7/R8	2.10	June 2004	<p>If the receiver Firmware Option date is the same as or later than the warranty date, you are entitled to run firmware version 2.10 at no cost.</p> <p>You can download firmware version 2.10 from: http://www.trimble.com/support.html</p> <p>If the receiver Firmware Option date is earlier than the warranty date, contact your local Trimble Distributor</p>
Trimble R7/5700 Trimble R8/5800	2.01 2.03	September 2003	<p>If the receiver Firmware Option date is the same as or later than the warranty date, you are entitled to run firmware version 2.01/2.03 at no cost.</p> <p>You can download firmware version 2.01/2.03 from: http://www.trimble.com/support.html</p> <p>If the receiver Firmware Option date is earlier than the warranty date, contact your local Trimble Distributor</p>
Trimble R7/5700 Trimble R8/5800	1.30 1.10	June 2003	<p>If the receiver Firmware Option date is the same as or later than the warranty date, you are entitled to run firmware version 1.30/1.10 at no cost.</p> <p>You can download firmware version 1.30/1.10 from: http://www.trimble.com/support.html</p> <p>If the receiver Firmware Option date is earlier than the warranty date, contact your local Trimble Distributor</p>

Note: All users are entitled to firmware versions 1.24 /1.02 and earlier.