

Trimble model 4000 SSi/SSe battery replacement information.

If locked in “Remote Monitor Active” mode.

This means the internal batteries have failed, the receiver has failed to hold memory and has lost the firmware file. To avoid this from occurring again the internal batteries will need to be replaced. *

The Firmware will need to be reloaded too. In order to reload the firmware you will need to be able to connect to the receiver with a PC using a Trimble download cable.

It is recommended that after you replace the internal batteries and reload the firmware to run the receiver to insure it produces acceptable data.

Information for battery replacement (refer to next page for pictures) :

1. The Batteries needed are two 3.6 V, rechargeable lithium, Half AA size batteries with solder leads (typical part number is: LS14250-AX or similar, cost is about \$8 each). The batteries may be a bit hard to locate but should be available through well-stocked electronic supply firms.
2. Carefully disassemble the receiver removing the chassis from the outer case and remove the board assembly from the chassis, paying close attention to how it goes back together. (see pictures on following page).
3. The board that has the batteries on it is one of the boards in the upper stack; the batteries are located near the rear of the unit.
4. Even though the batteries are visible – the board should be removed from the stack for access when soldering, to avoid any solder or debris from getting inside the assembly.
5. De-solder the old batteries and solder in the replacement batteries. Be sure to get the polarity in the correct orientation by observing the batteries you remove.
6. After re-powering the receiver, reload the firmware per the instructions on the **readme19B.txt** file contained in the zip file: -7.19 4000 FW. This also contains the 7.19 version of firmware found on our web site at: <http://facility.unavco.org/kb/questions/332/4000+series+7.19b+firmware>
7. Once you have recovered the firmware the receiver should track, log and function as it did before. Leave the unit connected to external power for at least several hours, or overnight to fully charge the new batteries.

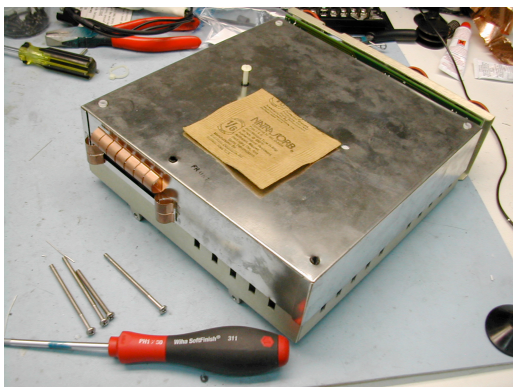
**** NOTE: Only someone with at least an intermediate degree of knowledge and experience with electronics and system repair should attempt this procedure.***



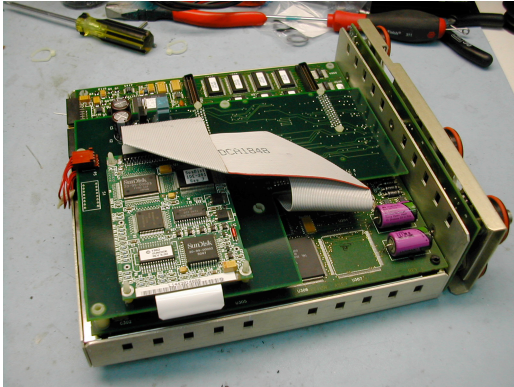
1. Remove screws from screen bezel



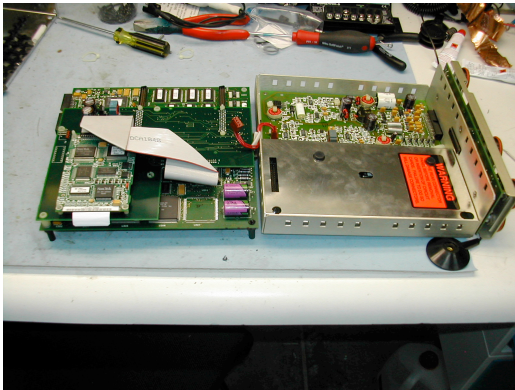
2. Disconnect and remove the Screen



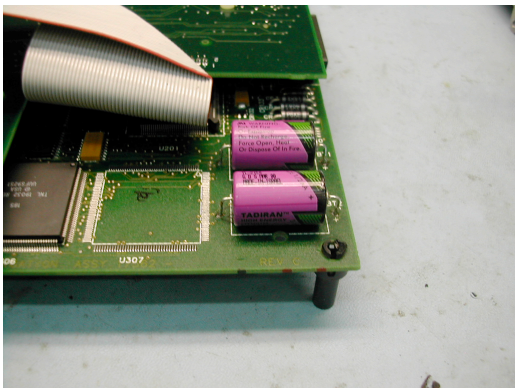
3. Remove the internal chassis from the Outer case and remove upper cover.



4. The main board stack



5. Remove the board assembly from the chassis



6. Battery locations, soldered to the board