

RELEASE NOTES

Trimble® NetR9™ Infrastructure GNSS Series Receivers

These release notes describe the latest improvements made to the Trimble® Infrastructure GNSS series receivers.

- [Introduction](#)
- [New Features and Changes](#)
- [Upgrade Procedure](#)
- [Legal Notices](#)

Introduction

These release notes describe the improvements made to the Trimble NetR9™ Infrastructure series receivers. The supported features depend on the receiver model and options installed.

To load and use firmware version 4.80, you must have a valid firmware warranty, dated 2 April 2013 or later. If necessary, contact your Trimble dealer to purchase a warranty.

Before you perform a firmware upgrade, download and backup any files or configuration settings.

New Features and Changes

General

- Minor translation updates.
- RTK engine processor usage further improved.
- RTX engine updated to version 3.0, improving convergence times.
- Updated OmniSTAR™ libraries.

Data formats

- Resolves issue whereby RTCM version 3 bandwidth limiting would be lost upon a reset.
- Resolves issue whereby enabling Position Monitoring would disable CMRx and RTCM version 3 outputs.
- GSOF updates for new GNSS constellations.
- RT27 updated to correctly reflect presence of external oscillator.

Data logging

- Resolves issue where an FTP list command may return file types other than those queried.
- On-board RINEX converter now handles BeiDou ephemeris data.
- FTP Push functionality now supports FTP Client passwords of up to 30 characters in length (previously 14 characters).

Tracking

- General GNSS constellation tracking updates.
- Improved handling of SBAS ionosphere models.
- Graphic user interface (GUI) display updated to better display GNSS constellations.
- Improved EGNOS positioning performance.
- GAGAN tracking updates.
- Trimble EVEREST™ multipath rejection algorithms improved for new GNSS constellations.

Application files

- Resolves issue whereby NetR9 clone files may not capture more than 8 logging sessions.
- Resolves issue whereby the NetR9 may not allow a GZIP compressed clone file to be uploaded.
- Option to set the system to default settings when installing a clone file now available.

Networking and security

- Improved handling of HTTPS SSL certificates.
- Improved resilience against FTP Server attacks.
- Bandwidth limiting option now implemented for NTRIP Caster and NTRIP Servers.
- DNS queries via PPP connections now use the PPP IP address.
- Improved handling of DNS entries when switching networks.
- Resolves issue where TCP port connections cannot be reestablished after a UDP broadcast port was configured.
- NTRIP Caster and NTRIP Server mountpoints no longer allow for the following characters:

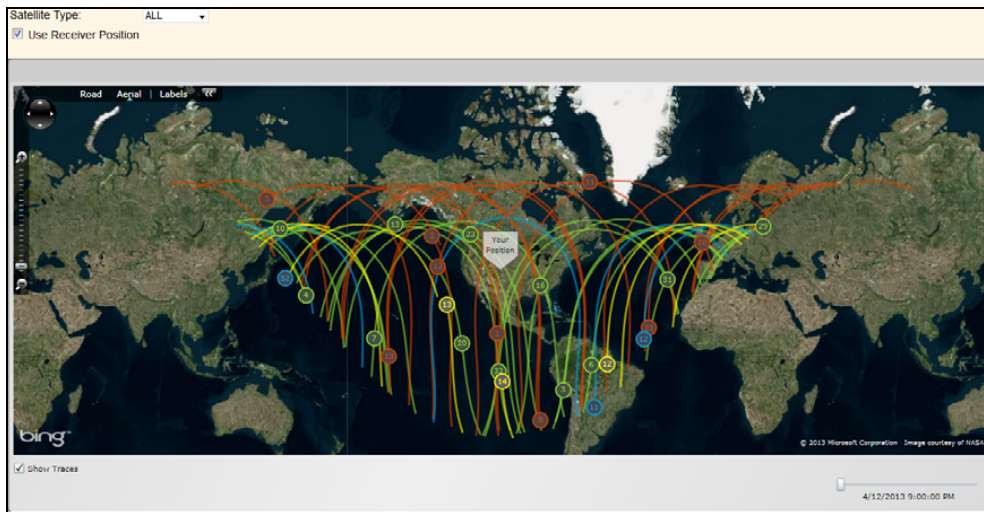
;	@	\$
/	&	'
?	=	(space)
:	+	

If any of these characters is entered it is replaced automatically with an underscore '_'.

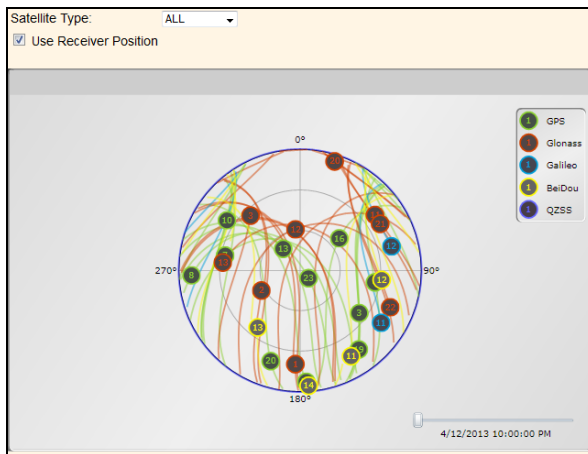
Web interface and front panel

- General GUI updates to improve browser rendering.
- MiniGUI no longer requires the use of cookies.
- Antenna height entry now consistent between the GUI and front panel display with a maximum value of 4.000 m.
- Improved stability of the *Email Alert* feature.
- References to *Compass* have been updated to *BeiDou*.
- *Automatic Firmware* check updated to handle server redirects.
- *Position Monitoring* now displays the Delta offsets from the monitoring position.
- Resolves issue whereby a *Met/Tilt* command that contained an '&' symbol could create GUI rendering problems.

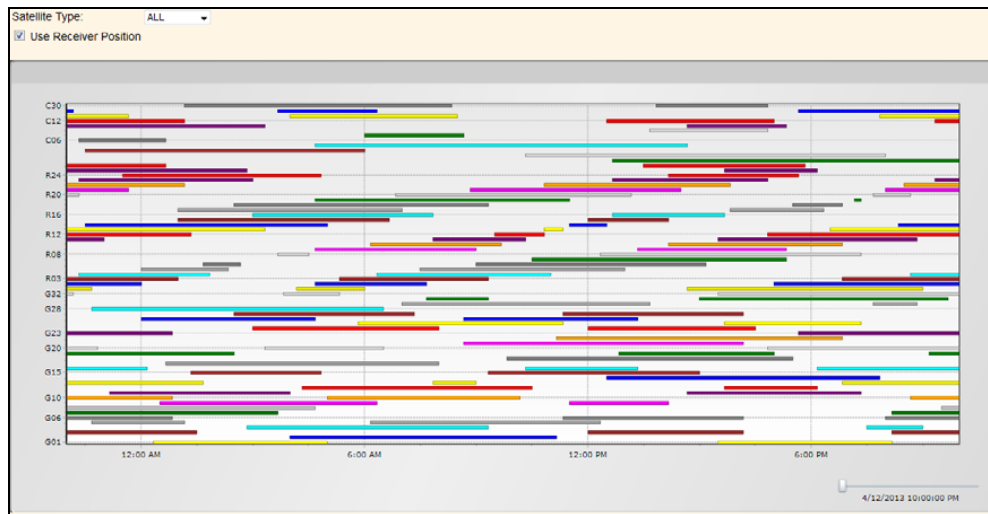
- New Web Interface menu, *Web Services*, that allows for the following selections:
 - Satellites - Map View



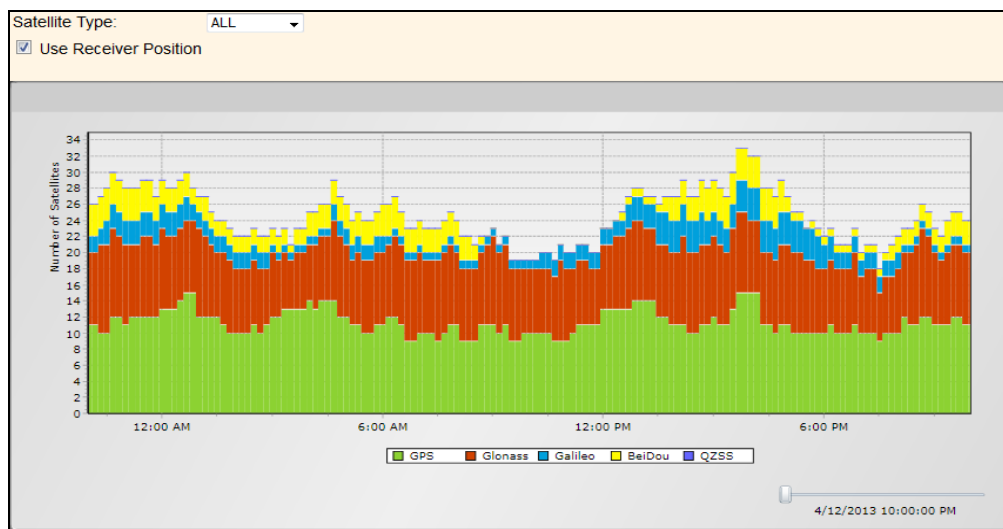
- Sky Plot



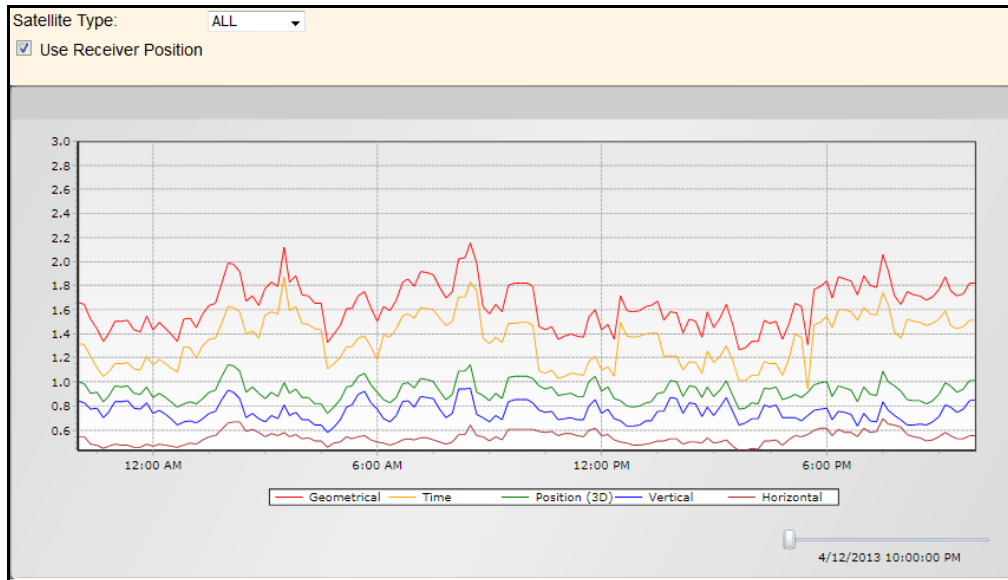
– Satellite Availability



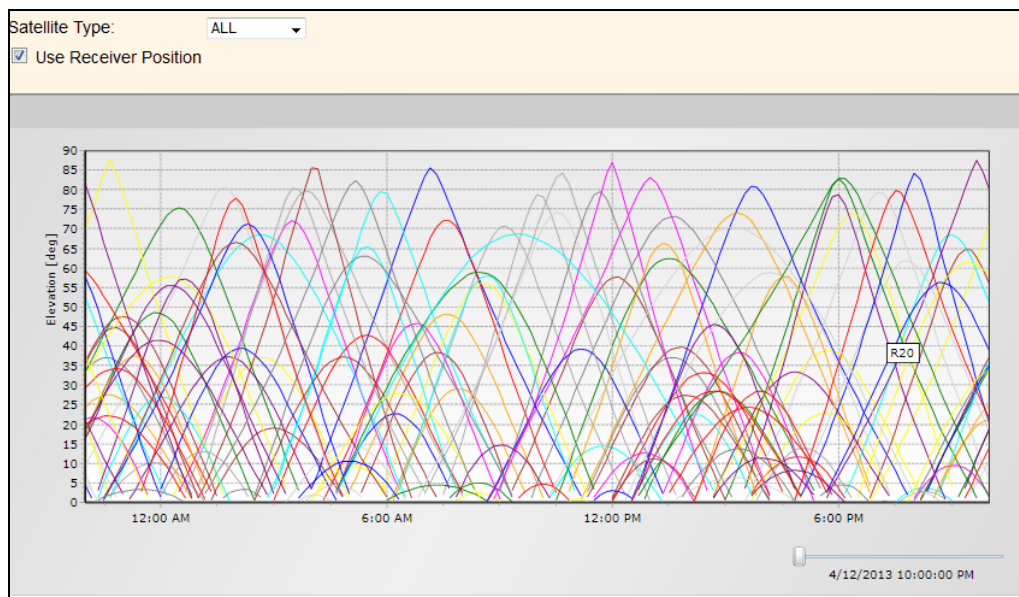
– Number of Satellites



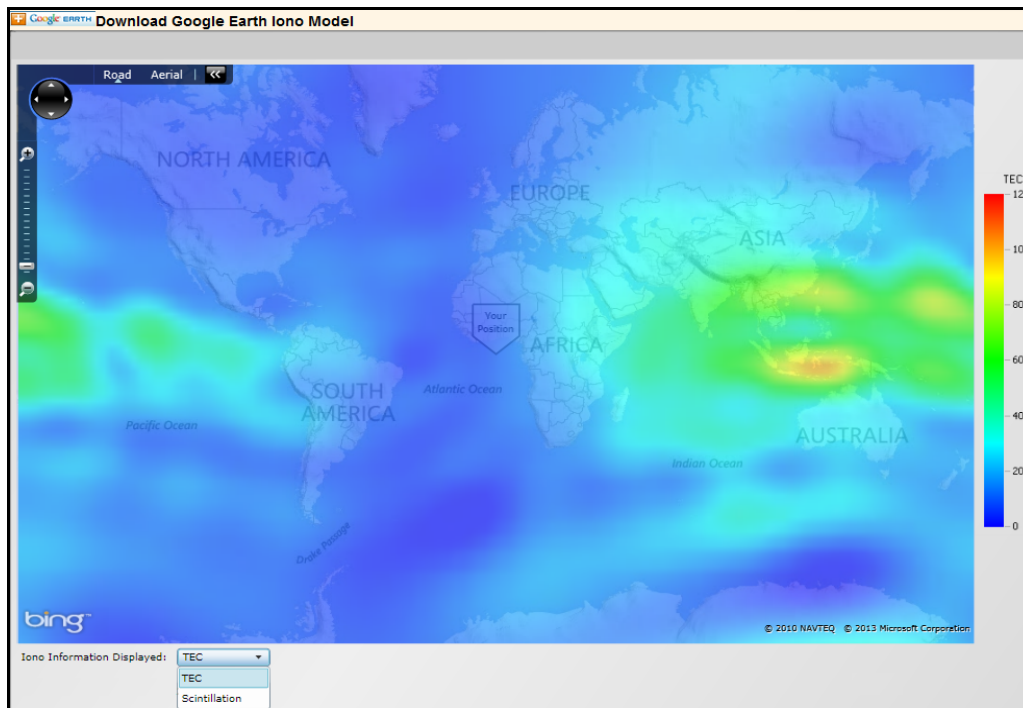
- DOP



- Elevation



– Ionospheric Map



- In order to use the Web Services, the receiver must have an Internet connection and the device/browser connecting to the receiver must have the Microsoft® Silverlight® development tool (or variant thereof) installed.

Upgrade Procedure

Make sure that the receiver firmware warranty date is 2 April 2013 or later.

Use one of the following methods:

- WinFlash utility: Use the latest version that is available with the version 4.80 Web package.
- Receiver Web User Interface: Make sure that the receiver is already running firmware version 4.xx or later. Download and install the version 4.80 *.TIMG file.

Legal Notices

Trimble Navigation Limited
Engineering and Construction Group
5475 Kellenburger Road
Dayton, Ohio 45424-1099
USA

800-538-7800 (toll free in USA)
+1-937-245-5600 Phone
+1-937-233-9004 Fax
www.trimble.com

Copyright and trademarks

© 2007–2013, Trimble Navigation Limited. Trimble, the Globe & Triangle logo, and SiteVision are trademarks of Trimble Navigation Limited, registered in the United States and in other countries. EVEREST, OmniSTAR, and NetR9 are trademarks of Trimble Navigation Limited. Developed under a License of the European Union and the European Space Agency. Microsoft and Silverlight are either registered trademarks or trademarks of Microsoft Corporation in the United States and/or other countries. All other trademarks are the property of their respective owners.

Release notice

This is the May 2013 release (Revision A) of the *Infrastructure GNSS Receivers Release Notes*. It applies to version 4.80 of the receiver firmware.

Product warranty information

For applicable product warranty information, please refer to the Warranty Card included with this Trimble product, or consult your Trimble reseller.

Notice to our European Union customers

For product recycling instructions and more information, please go to www.trimble.com/ev.shtml.

Recycling in Europe: To recycle Trimble WEEE (Waste Electrical and Electronic Equipment, products that run on Electric power), call +31 497 53 24 30 and ask for the “WEEE Associate”.

Or, mail a request for recycling instructions to:

Trimble Europe BV
c/o Menlo Worldwide Logistics
Meerheide 45
5521 DZ Eersel, NL.

